

Industrial Glands

CW Brass Gland with Integral Earth 419CE Series



Application

- > For steel wire armour cable

Features & Benefits

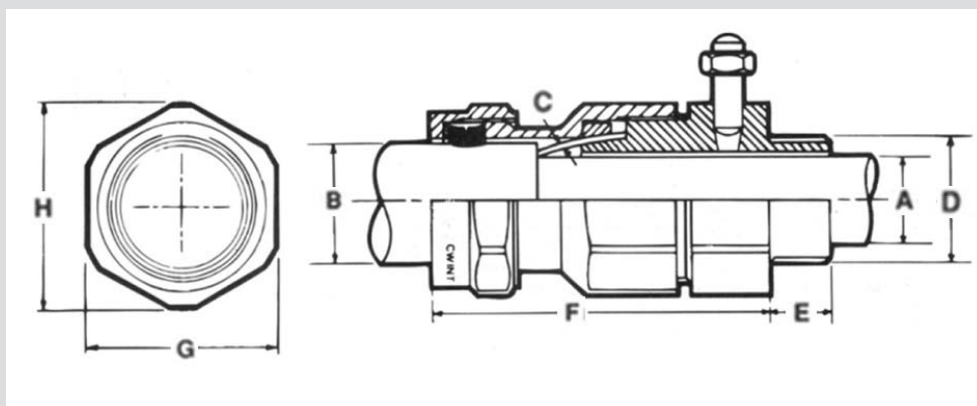
- > Brass indoor and outdoor cable gland with earth bonding connection
- > Suitable for circular galvanised steel single wire armoured, plastic or rubber sheathed cables
- > Outer seal grips sheath of cable
- > For use in most climatic conditions, weatherproof and waterproof
- > Three part armour lock with separate armour locking ring
- > Accessories available separately

Technical Data

- > EN50262
- > Gland rated to IP66 with use of suitable sealing washer or thread sealant at gland interface
- > Service temperature range -20°C to +90°C
- > Integral earth connection complies with GDCD 190 Category A (43.3kA for 1 second)



CW Brass Gland with Integral Earth 419CE Series



Gland Details

| Cable dimensions accommodated mm | | | | | Gland Reference | | Glands dimension mm | | | | | Accessories |
|----------------------------------|------|-----------|------|---------------------------|-----------------|---------------|---------------------|--------|-----------------------------------|-------------------|---------------------|--------------------------------|
| Diameter | | Overall B | | Armour wire diameter C | Size | Design Number | Entry thread | | Approx. length from shoulder F | Hexagon size | | Brass backnut Design number |
| Under armour A | | Min | Max | | | | Size | Length | | Across flats G | Across corners H | |
| Min | Max | Min | Max | | | | D | E | | | | |
| - | 11.6 | 8.0 | 15.8 | 0.9/1.25 | 20S | 419CE-52 | M20 × 1.5 | 10 | 56 | 30.5 | 34.0 | 429AA-53 |
| - | 13.9 | 11.7 | 20.8 | 0.9/1.25 | 20 | 419CE-53 | M20 × 1.5 | 10 | 56 | 30.5 | 34.0 | 429AA-53 |
| - | 19.9 | 17.0 | 27.2 | 1.25/1.6 | 25 | 419CE-55 | M25 × 1.5 | 10 | 63 | 42.4 | 48.0 | 429AA-55 |
| - | 26.2 | 23.5 | 33.5 | 1.6/2.0 | 32 | 419CE-56 | M32 × 1.5 | 10 | 73 | 56.4 | 61.5 | 429AA-56 |
| - | 32.1 | 29.0 | 39.9 | 1.6/2.0 | 40 | 419CE-57 | M40 × 1.5 | 15 | 77 | 56.4 | 61.5 | 429AA-57 |
| - | 44.0 | 39.5 | 52.6 | 2.0/2.5 | 50 | 419CE-59 | M50 × 1.5 | 15 | 84 | 70.1 | 77.2 | 429AA-59 |
| - | 55.9 | 51.3 | 65.3 | 2.5 | 63 | 419CE-61 | M63 × 1.5 | 15 | 84 | 90.1 | 100.0 | 429AA-61 |
| - | 67.9 | 62.5 | 78.0 | 2.5 | 75 | 419CE-63 | M75 × 1.5 | 15 | 94 | 106.2 | 117.0 | 429AA-63 |
| - | 74.0 | 68.0 | 88.0 | 3.15 | 85 | 419CE-64 | M85 × 2 | 20 | 125 | 115.0 | 126.0 | 429AA-64 |