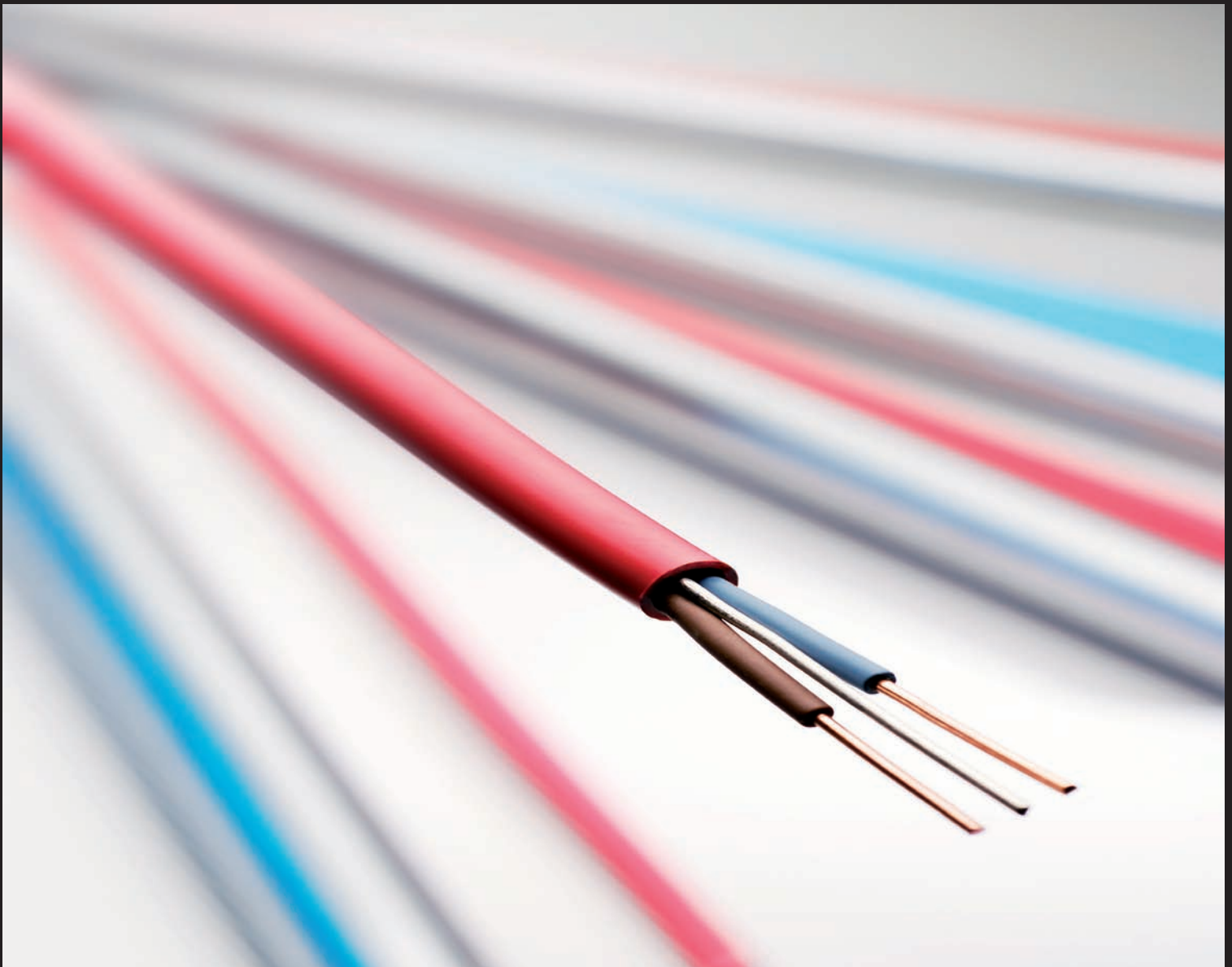


# CABLES TRADE PRICE LIST

**NO. TPR20 - 25th January 2012**



**ENERGY**



**FOR CABLES**

These cables are sold subject to Prysmian's Standard Conditions of Sale, copies of which are available on request, and on our website [www.prysmian.co.uk](http://www.prysmian.co.uk)

All prices quoted are exclusive of VAT which will be added at the appropriate rate at the time of invoice.

Prices for non-standard colours or packaging are available upon request.

For free delivery, all orders are subject to a minimum value of £1,000. Any order below this amount will be subject to a surcharge, details of which are available at time of order placement.

A premium of £50 is charged for next-day delivery.

For **any** product returns, please contact the After Sales Service Team on Tel: 0845 767 8345. Non-agreed returns will be refused.

**For further Information, please contact: Sales Office** Prysmian Cables & Systems Limited, Chickenhall Lane, Eastleigh, Hampshire, SO50 6YU **Tel: 0845 767 8345 Fax: 023 8029 5465**

**FOR COMPONENTS**

Prysmian Components' products are sold subject to our Standard Conditions of Sale, copies of which are available upon request, and on our website [www.prysmian.co.uk](http://www.prysmian.co.uk)

Prysmian shall have the right at any time prior to delivery or collection of the products to change their specification in accordance with Clause 3.2 of our Standard Conditions of Sale.

All prices are quoted exclusive of VAT, which will be added at the appropriate rate at the time of invoice.

All orders are subject to a minimum order value of £500 and minimum quantities for certain items.

All other products are generally available ex-stock subject to remaining unsold, and are normally delivered on a standard delivery day, subject to confirmation at time of order. Special delivery requirements are by exception and will be charged at cost. This cost will be confirmed at time of order.

For **any** product returns, please contact the After Sales Service Team on Tel: 0845 767 8345. Non-agreed returns will be refused.

**For further Information, please contact: Sales Office** Prysmian Cables & Systems Limited, Chickenhall Lane, Eastleigh, Hampshire, SO50 6YU **Tel: 0845 767 8345 Fax: 023 8029 5465**

## contents

---

**SECTION 1****PVC CABLES**

---

**SECTION 2****LSOH CABLES**

---

**SECTION 3****FIRE PERFORMANCE CABLES**

---

**SECTION 4****CABLE GLANDS**

---

**SECTION 5****CABLE CLEATS**

---

**SECTION 6****CABLE CONNECTORS**

---

**SECTION 7****CABLE JOINTS**

## 6491X - PVC insulated conduit wire to BS 6004

Conductor Nominal Area mm <sup>2</sup>	Pack Size Metres	Colour	Price		Group
			Per 100m £	Per 1000m £	
1 Solid	100 Reelpac/500 NR Drums	Standard	119	1,110	B
1.5	100 Reelpac/500 NR Drums	Standard	149	1,323	A
2.5	100 Reelpac/500 NR Drums	Standard	214	1,953	A
4	100 Reelpac/500 NR Drums	Standard	475	4,334	B
6	100 Reelpac/500 NR Drums	Standard	696	6,299	B
10	100 Reels/500 NR Drums	Standard	1,296	11,773	B
16	100 Reels/500 NR Drums	Standard	2,043	18,587	C
25	500 NR Drums	Standard	-	19,250	C
25	500 NR Drums	Green/Yellow	-	17,906	C
35	500 NR Drums	Standard	-	23,951	C
35	500 NR Drums	Green/Yellow	-	22,188	C
50	500 Drums	Standard	-	34,924	C
50	500 Drums	Green/Yellow	-	32,258	C
70	500 Drums	Standard	-	44,020	C
70	500 Drums	Green/Yellow	-	37,906	C
95	500 Drums	Standard	-	69,480	C
95	500 Drums	Green/Yellow	-	60,405	C

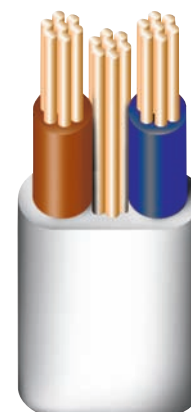
Standard colours - Black, White, Blue, Brown, Green/Yellow, or Grey.  
Conductors are Class 2 stranded except where shown.



## PVC insulated and sheathed, single core, flat twin and flat three core cables with bare CPC to BS6004

Conductor Nominal Area mm <sup>2</sup>	Pack Size Metres	6241YH - Light Grey Single Core with Bare CPC	Group	6242YH - Light Grey Flat Twin Core with Bare CPC		Group	6243YH - Light Grey Flat Three Core with Bare CPC		Group
		Per 1000m £		Per Pack £	Per 1000m £		Per Pack £	Per 1000m £	
1.0 Solid	100	3,160	C	280	2,549	A	737	6,698	B
1.5 Solid		3,953	C	348	3,181	A	1,163	10,572	B
2.5 Solid		-	-	477	4,350	A	-	-	-
4		-	-	1,625	14,795	B	-	-	-
6		-	-	1,931	17,572	B	-	-	-
10		-	-	3,185	28,987	C	-	-	-
16		-	-	5,083	46,202	C	-	-	-
1.0 Solid	50	-	-	167	2,991	A	432	7,849	B
1.5 Solid		-	-	205	3,744	A	679	12,379	B
2.5 Solid		-	-	284	5,147	A	-	-	-
4		-	-	1,055	17,354	B	-	-	-
6		-	-	1,132	20,592	B	-	-	-
10		-	-	1,713	31,148	C	-	-	-
16		-	-	2,731	49,660	C	-	-	-

Conductors are Class 2 stranded except where shown.  
6242YH with two Brown Cores are subject to a surcharge of 25%.



## PVC insulated and sheathed single core cables to BS 6004

Conductor Nominal Area mm <sup>2</sup>	Pack Size Metres	6181YH Single Core	Group
		Per 1000m £	
1.0 Solid	100	1,893	C
1.5 Solid		2,513	C
2.5 Solid		4,189	C
4		6,831	C
6		9,082	C
10		14,448	C
16		18,455	B
25		35,362	B
35		53,834	B
6	50	9,981	C
10		16,033	C
16		20,123	B
25		38,011	B
35		58,942	B

Conductors are Class 2 stranded except where shown.  
Standard colours - Brown/Grey, Blue/Grey.



## PVC insulated and sheathed, 300/500 V flexible cords to BS 6500



Conductor Nominal Area mm <sup>2</sup>	Pack Size Metres	Ref No. 3182Y Two Core Circular White Sheath	Group	Ref No. 3183Y Three Core Circular White or Black Sheath	Group	Ref No. 3184Y Four Core Circular White or Black Sheath	Ref No. 3185Y Five Core Circular White or Black Sheath	Ref No. 3192Y Two Core Flat White Sheath	Group
		Per 1000m £		Per 1000m £		Per 1000m £	Per 1000m £	Per 1000m £	
0.75	100	2,019	E	1,960	D	5,458	11,070	2,128	E
1		2,616	E	2,388	D	6,391	12,036	-	E
1.5		3,716	E	3,311	D	9,105	16,805	-	E
2.5		7,884	E	6,771	E	14,060	26,529	-	E
0.75	50	2,258	E	2,187	E	6,123	12,301	2,275	E
1		2,801	E	2,655	E	7,155	13,477	-	E
1.5		4,131	E	3,697	E	10,171	18,860	-	E
2.5		8,755	E	7,565	E	15,728	29,682	-	E

Conductors are Class 5 flexible

## PVC insulated and sheathed, 300/300 V light flexible cords to BS 6500



Conductor Nominal Area mm <sup>2</sup>	Pack Size Metres	Ref No. 2182Y Two Core Circular White Sheath	Ref No. 2183Y Three Core Circular White Sheath	Ref No. 2192Y Two Core Flat White Sheath	Group
		Per 1000m £	Per 1000m £	Per 1000m £	
0.5	100	1,277	1,728	1,649	E
0.75		1,975	2,713	2,031	E
0.5	50	1,427	1,904	1,841	E
0.75		2,187	3,025	2,275	E

Conductors are Class 5 flexible

## PVC insulated and sheathed, 300/500 V heat resisting flexible cords to BS 6500



Conductor Nominal Area mm <sup>2</sup>	Pack Size Metres	Ref No. 3092Y Two Core Circular White Sheath	Ref No. 3093Y Three Core Circular White Sheath	Group
		Per 1000m £	Per 1000m £	
0.5	100	2,760	3,759	E
0.75		3,356	3,996	E
1		-	5,446	E
1.5		-	7,586	E
2.5		-	11,366	E
0.5	50	3,093	4,212	E
0.75		3,765	4,471	E
1		-	6,078	E
1.5		-	8,487	E
2.5		-	12,736	E

Conductors are Class 5 flexible

## XLPE insulated, PVC sheathed, armoured cables to BS 5467



Conductor Nominal Area mm <sup>2</sup>		1.5	Group	2.5	Group	4	6	10	16	Group
Ref. No.	No. of Cores	Per 1000m £		Per 1000m £		Per 1000m £	Per 1000m £	Per 1000m £	Per 1000m £	
6942XLH	2	5,550	F	6,386	F	10,085	12,735	19,130	23,421	G
6943XLH	3	6,230	F	7,639	F	11,842	15,018	26,812	33,159	G
6944XLH	4	6,923	F	8,832	F	14,116	19,074	31,253	36,757	G
6945XLH	5	11,541	G	15,173	G	23,798	-	-	-	G
6947XL	7	13,028	G	17,714	G	25,957	-	-	-	G
694/12XL	12	21,131	G	28,340	G	-	-	-	-	-
694/19XL	19	31,931	G	44,403	G	-	-	-	-	-
694/27XL	27	46,877	G	60,095	G	-	-	-	-	-
694/37XL	37	60,249	G	79,665	G	-	-	-	-	-

Standard Colour - Black.  
Conductors are Class 2 stranded

## 6491B - LSOH® conduit wire to BS 7211

Conductor Nominal Area mm <sup>2</sup>	Pack Size Metres	Colour	Price	Group
			Per 1000m £	
1.5	100 Reels/500 NR Drums	Standard	2,012	H
2.5	100 Reels/500 NR Drums	Standard	2,753	H
4	100 Reels/500 NR Drums	Standard	5,588	J
6	100 Reels/500 NR Drums	Standard	8,309	J
10	100 Reels/500 NR Drums	Standard	14,129	J
16	100 Reels/500 NR Drums	Standard	19,974	J
25	500 NR Drums	Green/Yellow	37,021	J
25	500 NR Drums	Standard	39,795	J
35	500 NR Drums	Green/Yellow	47,681	J
35	500 NR Drums	Standard	51,440	J
50	500 Drums	Green/Yellow	54,571	J
50	500 Drums	Standard	59,094	J
70	500 Drums	Green/Yellow	74,100	J
70	500 Drums	Standard	86,036	J
95	500 Drums	Green/Yellow	92,736	J
95	500 Drums	Standard	106,651	J

Standard Colours - Black, Blue, Green/Yellow, Brown & Grey.  
Conductors are Class 2 stranded



## 6242B - LSOH® insulated and sheathed, flat twin and flat three core cables with bare CPC to BS 7211

Conductor Nominal Area mm <sup>2</sup>	Pack Size Metres	6242BH - White Flat Twin Core with Bare CPC		Group	6243BH - White Flat Twin Core with Bare CPC		Group
		Per Pack £	Per 1000m £		Per Pack £	Per 1000m £	
1.0 Solid	100	455	4,154	T	1,337	12,156	V
1.5 Solid		480	4,367	T	1,695	15,446	U
2.5 Solid		655	6,036	T	-	-	-
4		1,995	18,176	U	-	-	-
6		2,843	25,896	U	-	-	-
10		5,105	46,448	U	-	-	-
16		7,441	67,735	V	-	-	-

Conductors are Class 2 stranded except where shown.



## LSX™

Conductor Nominal Area mm <sup>2</sup>	Pack Size Metres	LSX Two Core with bare CPC	LSX Three Core with bare CPC	LSX Four Core with bare CPC	Group
		Per 1000m £	Per 1000m £	Per 1000m £	
1	100	4,534	5,248	6,087	K
1.5		5,118	5,956	7,167	K
2.5		6,574	7,886	9,226	K
4		11,152	13,571	15,094	K
6		13,870	18,024	20,774	K

Conductors are Class 2 stranded.



## Piresafe™ Flex

Conductor Nominal Area mm <sup>2</sup>	Pack Size Metres	Ref No. 3182B LSOH® Twin Circular White Sheath	Ref No. 3183B LSOH® Three Core Circular White Sheath	Ref No. 3184B LSOH® Four Core Circular White Sheath	Group
		Per 1000m £	Per 1000m £	Per 1000m £	
0.75	100	3,219	3,625	4,204	L
1		3,805	3,844	4,786	L
1.5		5,056	5,232	6,181	L
2.5		7,033	8,128	9,476	L

Conductors are Class 5 flexible.



## XLPE insulated, LSOH® sheathed, armoured cables to BS 6724

Conductor Nominal Area mm <sup>2</sup>	1.5		Group	2.5		Group	4		6		10		16		Group
	Ref. No.	No. of Cores		Per 1000m £	Per 1000m £		Per 1000m £	Per 1000m £	Per 1000m £	Per 1000m £	Per 1000m £	Per 1000m £	Per 1000m £	Per 1000m £	
6942LSH	2	9,158	M	10,470	M	13,340	15,357	20,761	28,735	M					
6943LSH	3	10,060	M	11,074	M	15,003	18,144	25,145	33,573	M					
6944LSH	4	11,145	M	13,310	M	17,592	22,335	29,194	40,986	M					
6945LSH	5	14,897	M	18,470	M	-	-	-	-	M					
6947LS	7	19,512	M	24,753	M	-	-	-	-	M					
694/12LS	12	28,749	M	35,768	M	-	-	-	-	M					
694/19LS	19	41,975	M	56,091	M	-	-	-	-	M					
694/27LS	27	59,028	M	75,646	M	-	-	-	-	M					
694/37LS	37	81,988	M	103,684	M	-	-	-	-	M					

Standard Colour - Black.  
Conductors are Class 2 stranded





## FP100®

Conductor Nominal Area mm <sup>2</sup>	Pack Size Metres	FP100® Single Core	Group
		Per 1000m £	
1	100	2,694	P
1.5		2,826	P
2.5		3,392	P
4		4,100	P
6		4,334	P
10		6,619	P

Standard colours - Black, Blue, Brown, Grey & Green/Yellow  
Conductors are Class 2 stranded.



## FP200 GOLD®

Conductor Nominal Area mm <sup>2</sup>	Pack Size Metres	FP200 GOLD® Two Core with Bare CPC	Group	FP200 GOLD® Three Core with Bare CPC	Group	FP200 GOLD® Four Core with Bare CPC	Group
		Per 1000m £		Per 1000m £		Per 1000m £	
1	100	5,820	S	7,382	S	8,966	S
1.5		4,331	R	9,228	S	11,177	S
2.5		9,014	S	11,454	S	15,625	S
4 Stranded		14,036	S	18,893	S	24,529	S
1.5	500	4,331	R	-	-	-	-
2.5		9,014	S	-	-	-	-

Standard sheath colours - White or Red  
Conductors are Class 1 solid except where shown.

Standard sheath colours - White or Red  
Conductors are Class 1 solid except where shown.



## FP200 FLEX™

Conductor Nominal Area mm <sup>2</sup>	Pack Size Metres	FP200 FLEX™ Two Core with Bare CPC	Group	FP200 FLEX™ Three Core with Bare CPC	Group	FP200 FLEX™ Four Core with Bare CPC	Group
		Per 1000m £		Per 1000m £		Per 1000m £	
1.5	100	4,413	R	9,412	S	11,398	S
2.5		9,185	S	11,677	S	15,940	S
1.5	500	4,413	R	-	-	-	-
2.5		9,185	S	-	-	-	-

Standard sheath colours - White or Red  
Conductors are Class 2 stranded.



## FP PLUS™

Conductor Nominal Area mm <sup>2</sup>	Pack Size Metres	FP PLUS™ Two Core with Bare CPC	FP PLUS™ Three Core with Bare CPC	FP PLUS™ Four Core with Bare CPC	Group
		Per 1000m £	Per 1000m £	Per 1000m £	
1.5	100	7,372	9,874	11,636	S
2.5		9,331	14,679	17,547	S

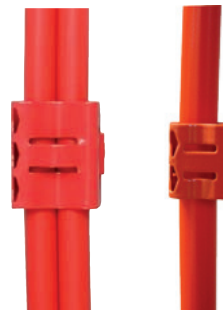
Standard sheath colours - White or Red  
Conductors are Class 1 solid.



## FP PLUS FLEX™

Conductor Nominal Area mm <sup>2</sup>	Pack Size Metres	FP PLUS FLEX™ Two Core with Bare CPC	Group
		Per 1000m £	
1.5	100	7,743	S
2.5 Stranded		9,793	S
4.0 Stranded		14,735	S

Standard sheath colours - White or Red  
Conductors are Class 1 solid except where shown.



## FP FIREFIX™ - FP FIXING SYSTEM & FIXING CLIPS

Code	To Hold	Clip Colour	CABLE SIZE				
			FP200 GOLD®				FP PLUS™
			2 x 1.5mm <sup>2</sup> Per Pack £	3 x 1.0mm <sup>2</sup> Per Pack £	3 x 1.5mm <sup>2</sup> Per Pack £	4 x 1.0mm <sup>2</sup> Per Pack £	2 x 1.5mm <sup>2</sup> Per Pack £
UFPNF01R	1 Cable	Red	315.56	-	-	-	-
UFPNF01W	1 Cable	White	315.56	-	-	-	-
UFPNF02R	1 or 2 Cables	Red	315.56	315.56	-	-	-
UFPNF02W	1 or 2 Cables	White	315.56	315.56	-	-	-
UFPNF04R	1 or 2 Cables	Red	-	-	315.56	315.56	315.56 (1 cable only)
UFPNF04W	1 or 2 Cables	White	-	-	315.56	315.56	315.56 (1 cable only)

Nail fired fixing system for use with FP cable.  
UFPNF01R/W kits contain: 500 FP Firefix™ clips, 500 nails and 1 fuel cell  
UFPNF02R/W and UFPNF04R/W kits contain: 500 FP Firefix™ clips, 500 nails, 5 adaptors and 1 fuel cell  
System for use with Pulsa 700E gas nailing tool - Tool sold separately



## AP CABLE CLIPS - RED AND WHITE

Code	CABLE SIZE								
	FP200 GOLD®								
	2 x 1.0mm <sup>2</sup> Per Pack £	2 x 1.5mm <sup>2</sup> Per Pack £	2 x 2.5mm <sup>2</sup> Per Pack £	3 x 1.0mm <sup>2</sup> Per Pack £	3 x 1.5mm <sup>2</sup> Per Pack £	3 x 2.5mm <sup>2</sup> Per Pack £	4 x 1.0mm <sup>2</sup> Per Pack £	4 x 1.5mm <sup>2</sup> Per Pack £	4 x 2.5mm <sup>2</sup> Per Pack £
AP7*	9.52	9.52	-	9.52	-	-	-	-	-
AP8*	-	-	-	-	9.95	-	9.95	-	-
AP9*	-	-	10.49	-	-	-	-	10.49	-
AP10*	-	-	-	-	-	10.98	-	-	-
AP11*	-	-	-	-	-	-	-	-	11.09

\*Note: Add suffix 'R' for red or 'W' for white e.g. AP6W

**BW (INDOOR) TYPE - FOR SWA CABLE**

(Includes Gland, Steel Backnut, PVC Shroud and Brass Earth Tag)



Size	Items per kit	Ref. No.	Price £ each
20S	2	BW20SK	P.O.A
20	2	BW20K	P.O.A
25	2	BW25K	P.O.A
32	1	BW32K	P.O.A
40	1	BW40K	P.O.A
50	1	BW50K	P.O.A
63	1	BW63K	P.O.A
75S	1	BW75SK	P.O.A
75	1	BW75K	P.O.A

**E1W (INDOOR/OUTDOOR) TYPE - FOR SWA CABLE**

(Includes Gland, Steel Backnut, PVC Shroud and Brass Earth Tag)



Size	Items per kit	Ref. No.	Price £ each
20SS	2	E1W20SSK	P.O.A
20S	2	E1W20SK	P.O.A
20	2	E1W20K	P.O.A
25	2	E1W25K	P.O.A
32	1	E1W32K	P.O.A
40	1	E1W40K	P.O.A
50S	1	E1W50SK	P.O.A
50	1	E1W50K	P.O.A
63S	1	E1W63SK	P.O.A
63	1	E1W63K	P.O.A
75S	1	E1W75SK	P.O.A
75	1	E1W75K	P.O.A

**CW (INDOOR/OUTDOOR) TYPE - FOR SWA CABLE**

(Includes Gland, Steel Backnut, PVC Shroud and Brass Earth Tag)



Size	Items per kit	Ref. No.	Price £ each
20SS	2	CW20SSK	P.O.A
20S	2	CW20SK	P.O.A
20	2	CW20K	P.O.A
25	2	CW25K	P.O.A
32	1	CW32K	P.O.A
40	1	CW40K	P.O.A
50S	1	CW50SK	P.O.A
50	1	CW50K	P.O.A
63	1	CW63K	P.O.A
75	1	CW75K	P.O.A
85	1	CW85K	P.O.A

\* Note: P.O.A = Price On Application

**A1/A2 (INDOOR/OUTDOOR) TYPE - UNARMoured CABLE**

(Includes Gland, PVC Shroud, Steel Backnut)



Size	Items per kit	Ref. No.	Price £ each
20SS	2	KM40971	P.O.A
20S	2	KM40952	P.O.A
20	2	KM40953	P.O.A
25	2	KM40955	P.O.A
32	1	KM40956	P.O.A
40	1	KM40957	P.O.A
50S	1	KM40958	P.O.A
50	1	KM40959	P.O.A
63S	1	KM40960	P.O.A
63	1	KM40961	P.O.A
75S	1	KM40962	P.O.A
75	1	KM40963	P.O.A

**NYLON IP68 (INDOOR/OUTDOOR) TYPE - UNARMoured CABLE**

Note : For Black insert 'B' e.g. 403KB51  
For White insert 'W',  
Red insert 'R',  
Grey insert 'G'

Size	Ref. No.	Price £ per 100
M16	403K*51	P.O.A
M20	403K*53	P.O.A
M25	403K*55	P.O.A
M32	403K*56	P.O.A



**CABLE GLANDS FOR FP FIRE RESISTANT CABLES**

GL FP2520 - RED AND WHITE

\* Note : Add suffix "R" for Red or "W" for White e.g. FP2520R



FP200 Cable size cores/mm <sup>2</sup>	Ref. No.	Price £ per 100
2 x 1.0	FP2520*	P.O.A
2 x 1.5	FP2520*	P.O.A
2 x 2.5	FP2520*	P.O.A
2 x 4.0	FP2520*	P.O.A
3 x 1.0	FP2520*	P.O.A
3 x 1.5	FP2520*	P.O.A
3 x 2.5	FP2520*	P.O.A
3 x 4.0	FP2520*	P.O.A
4 x 1.0	FP2520*	P.O.A
4 x 1.5	FP2520*	P.O.A
4 x 2.5	FP2520*	P.O.A

**AFUMEX® LSOH BW (INDOOR) TYPE - FOR SWA CABLE**

(Includes Gland, Brass Backnut, Afumex® Shroud, and Earth Tag)



Size	Items per kit	Ref. No.	Price £ each
20S	2	LSF20SBW	P.O.A
20	2	LSF20BW	P.O.A
25	2	LSF25BW	P.O.A
32	1	LSF32BW	P.O.A
40	1	LSF40BW	P.O.A
50	1	LSF50BW	P.O.A
63	1	LSF63BW	P.O.A
75S	1	LSF75SBW	P.O.A
75	1	LSF75BW	P.O.A

LUL approved  
Designed for use with FP, AFUMEX LSOH & LSF cables

**AFUMEX® LSOH A1/A2 (INDOOR/OUTDOOR) TYPE - FOR UNARMoured CABLE**

(Includes Gland, Brass Backnut and Afumex® Shroud)



Size	Items per kit	Ref. No.	Price £ each
20SS	2	423LSF71	P.O.A
20S	2	423LSF52	P.O.A
20	2	423LSF53	P.O.A
25	2	423LSF55	P.O.A
32	1	423LSF56	P.O.A
40	1	423LSF57	P.O.A
50S	1	423LSF58	P.O.A
50	1	423LSF59	P.O.A
63S	1	423LSF60	P.O.A
63	1	423LSF61	P.O.A
75S	1	423LSF62	P.O.A
75	1	423LSF63	P.O.A

LUL approved  
Designed for use with FP, AFUMEX LSOH & LSF cables

**AFUMEX® LSOH CW (INDOOR/OUTDOOR) TYPE - FOR SWA CABLE**

(Includes Gland, Brass Backnut, Afumex® Shroud, and Earth Tag)



Size	Items per kit	Ref. No.	Price £ each
20SS	2	LSF20SSCW	P.O.A
20S	2	LSF20SCW	P.O.A
20	2	LSF20CW	P.O.A
25	2	LSF25CW	P.O.A
32	1	LSF32CW	P.O.A
40	1	LSF40CW	P.O.A
50S	1	LSF50SCW	P.O.A
50	1	LSF50CW	P.O.A
63	1	LSF63CW	P.O.A
75	1	LSF75CW	P.O.A

LUL approved  
Designed for use with FP, AFUMEX LSOH & LSF cables

**TELCLEATS (Black Polythene)**



Cable Diameter mm	Ref. No.	Price £ per 100
10.5 - 14.15	385AA01	P.O.A
12.2 - 16.7	385AA02	P.O.A
14.6 - 19.8	385AA03	P.O.A
17.7 - 24.0	385AA04	P.O.A
21.7 - 28.5	385AA05	P.O.A
26.2 - 34.2	385AA06	P.O.A
31.9 - 41.6	385AA07	P.O.A
39.3 - 51.1	385AA08	P.O.A

**AFUMEX® LSOH TELCLEATS**



Cable Diameter mm	Ref. No.	Price £ per 100
10.5 - 14.15	385LSF01	P.O.A
12.2 - 16.7	385LSF02	P.O.A
14.6 - 19.8	385LSF03	P.O.A
17.7 - 24.0	385LSF04	P.O.A
21.7 - 28.5	385LSF05	P.O.A
26.2 - 34.2	385LSF06	P.O.A
31.9 - 41.6	385LSF07	P.O.A
39.3 - 51.1	385LSF08	P.O.A

LUL approved  
Designed for use with AFUMEX LSOH & LSF cables

**AFUMEX® LSOH HOOK CLEATS**



Cable Diameter mm	Ref. No.	Price £ each
25 - 35	384LSF01	P.O.A
34 - 44	384LSF02	P.O.A
43 - 53	384LSF03	P.O.A
52 - 62	384LSF04	P.O.A
61 - 71	384LSF05	P.O.A
70 - 80	384LSF06	P.O.A

Designed for use with AFUMEX LSOH & LSF cables

**CABLE TIES - NYLON, COLOUR - BLACK**



Size	Ref. No.	Price £ each
96 x 2.5	BB18S	P.O.A
150 x 3.5	BB40S	P.O.A
203 x 3.5	BB40L	P.O.A
190 x 5.0	BB50S	P.O.A
280 x 5.0	BB50A	P.O.A
368 x 5.0	BB50L	P.O.A
380 x 8.0	BB120S	P.O.A
550 x 8.0	BB120L	P.O.A

\* Note: P.O.A = Price On Application

0.5 - 1.5mm<sup>2</sup> RED RINGS



1.0 - 2.5mm<sup>2</sup> BLUE RINGS



4.0 - 6.0mm<sup>2</sup> YELLOW RINGS



Stud Size mm <sup>2</sup>	Reference Number	Price £ per 100
3.0	BER3PAK	P.O.A
3.5	BER35PAK	P.O.A
4.0	BER4PAK	P.O.A
5.0	BER5PAK	P.O.A
6.0	BER6PAK	P.O.A
8.0	BER8PAK	P.O.A
10.0	BER10PAK	P.O.A

Stud Size mm	Reference Number	Price £ per 100
3.0	BEB3PAK	P.O.A
3.5	BEB35PAK	P.O.A
4.0	BEB4PAK	P.O.A
5.0	BEB5PAK	P.O.A
6.0	BEB6PAK	P.O.A
8.0	BEB8PAK	P.O.A
10.0	BEB10PAK	P.O.A
12.0	BEB12PAK	P.O.A

Stud Size mm	Reference Number	Price £ per 100
3.0	BEY3PAK	P.O.A
4.0	BEY4PAK	P.O.A
5.0	BEY5PAK	P.O.A
6.0	BEY6PAK	P.O.A
8.0	BEY8PAK	P.O.A
10.0	BEY10PAK	P.O.A
12.0	BEY12PAK	P.O.A

0.5 - 1.5mm<sup>2</sup> RED PIN



1.0 - 2.5mm<sup>2</sup> BLUE PIN



4.0 - 6.0mm<sup>2</sup> YELLOW PIN



Length mm	Reference Number	Price £ per 100
12.0	BER10PPAK	P.O.A

Length mm	Reference Number	Price £ per 100
12.0	BEB10PPAK	P.O.A

Length mm	Reference Number	Price £ per 100
14.0	BEY10PPAK	P.O.A

0.5 - 1.5mm<sup>2</sup> RED BUTT SPLICES



1.0 - 2.5mm<sup>2</sup> BLUE BUTT SPLICES



4.0 - 6.0mm<sup>2</sup> YELLOW BUTT SPLICES



Reference Number	Price £ per 100
BERSPAK	P.O.A

Reference Number	Price £ per 100
BEBSPAK	P.O.A

Reference Number	Price £ per 100
BEYSPAK	P.O.A

0.5 - 1.5mm<sup>2</sup> RED PUSH ONS



1.0 - 2.5mm<sup>2</sup> BLUE PUSH ONS



4.0 - 6.0mm<sup>2</sup> YELLOW PUSH ONS



For Tab Size	Reference Number	Price £ per 100
6.3x0.8	BDR63FPAK	P.O.A
6.3x0.8	BDR63FEPAK	P.O.A

For Tab Size	Reference Number	Price £ per 100
6.3x0.8	BDB63FPAK	P.O.A
6.3x0.8	BDB63FEPAK	P.O.A

For Tab Size	Reference Number	Price £ per 100
6.3x0.8	BDY63FPAK	P.O.A
6.3x0.8	BDY63FEPAK	P.O.A
9.5x1.2	BDY95FPAK	P.O.A

\* Note: P.O.A = Price On Application

### HANDTOOLS RATCHET



Capacity mm <sup>2</sup>	Description	Ref. No.	Price £ each
0.5 to 6.0	Pre-insulated	BMR6GP3	P.O.A

### TUBE TERMINALS FOR COPPER CONDUCTORS 1 - 1000mm<sup>2</sup>



Stranded Cu cable size mm <sup>2</sup>	Stud Size mm	Ref. No.	Price £ per 100
0.75 - 1.5	3.5	BT1C35	P.O.A
0.75 - 1.5	4.0	BT1C4	P.O.A
0.75 - 1.5	5.0	BT1C5	P.O.A
1.5 - 2.5	3.5	BT2C35	P.O.A
1.5 - 2.5	4.0	BT2C4	P.O.A
1.5 - 2.5	5.0	BT2C5	P.O.A
1.5 - 2.5	6.0	BT2C6	P.O.A
1.5 - 2.5	8.0	BT2C8	P.O.A
4.0 - 6.0	3.5/4.0	BT6C35/4	P.O.A
4.0 - 6.0	5.0	BT6C5	P.O.A
4.0 - 6.0	6.0	BT6C6	P.O.A
4.0 - 6.0	8.0	BT6C8	P.O.A
4.0 - 6.0	10.0	BT6C10	P.O.A
10	5.0	BT10C5	P.O.A
10	6.0	BT10C6	P.O.A
10	8.0	BT10C8	P.O.A
10	10.0	BT10C10	P.O.A
10	12.0	BT10C12	P.O.A
16	5.0	BT16C5	P.O.A
16	6.0	BT16C6	P.O.A
16	8.0	BT16C8	P.O.A
16	10.0	BT16C10	P.O.A
16	12.0	BT16C12	P.O.A
25	5.0	BT25C5	P.O.A
25	6.0	BT25C6	P.O.A
25	8.0	BT25C8	P.O.A
25	10.0	BT25C10	P.O.A
25	12.0	BT25C12	P.O.A
35	6.0	BT35C6	P.O.A
35	8.0	BT35C8	P.O.A
35	10.0	BT35C10	P.O.A
35	12.0	BT35C12	P.O.A
50	6.0	BT50C6	P.O.A
50	8.0	BT50C8	P.O.A
50	10.0	BT50C10	P.O.A
50	12.0	BT50C12	P.O.A
70	6.0	BT70C6	P.O.A
70	8.0	BT70C8	P.O.A
70	10.0	BT70C10	P.O.A
70	12.0	BT70C12	P.O.A
70	16.0	BT70C16	P.O.A
95	8.0	BT95C8	P.O.A
95	10.0	BT95C10	P.O.A
95	12.0	BT95C12	P.O.A
95	16.0	BT95C16	P.O.A
120	10.0	BT120C10	P.O.A
120	12.0	BT120C12	P.O.A
120	16.0	BT120C16	P.O.A
120	20.0	BT120C20	P.O.A

### LOW VOLTAGE (600/1000 VOLTS) CABLE JOINTS

Polyurethane 'twin pack' resin straight joints - including armour bond and 4 compression connectors.



Ref. No.	Cable(s)	Price £ each
PUJ2CC	4x4mm <sup>2</sup>	P.O.A
PUJ6CC	4x6mm <sup>2</sup>	P.O.A
PUJ10CC	4x10mm <sup>2</sup>	P.O.A
PUJ16CC	4x16mm <sup>2</sup>	P.O.A
PUJ25CC	4x25mm <sup>2</sup>	P.O.A
PUJ35CC	4x35mm <sup>2</sup>	P.O.A
PUJ50CC	4x50mm <sup>2</sup>	P.O.A
PUJ70CC	4x70mm <sup>2</sup>	P.O.A
PUJ95CC	4x95mm <sup>2</sup>	P.O.A
PUJ120CC	4x120mm <sup>2</sup>	P.O.A
PUJ150CC	4x150mm <sup>2</sup>	P.O.A
PUJ185CC	4x185mm <sup>2</sup>	P.O.A
PUJ240CC	4x240mm <sup>2</sup>	P.O.A
PUJ300CC	4x300mm <sup>2</sup>	P.O.A
PUJ400CC	4x400mm <sup>2</sup>	P.O.A

### LOW VOLTAGE (600/1000 VOLTS) CABLE JOINTS

Polyurethane 'twin pack' resin straight joints - including armour bond. (Connectors not included).



Ref. No.	Max Cable Range	Price £ each
MPJ1	4x6mm <sup>2</sup>	P.O.A
MPJ2	4x10mm <sup>2</sup>	P.O.A
MPJ3	4x25mm <sup>2</sup>	P.O.A
MPJ4	4x50mm <sup>2</sup>	P.O.A
MPJ5	4x95mm <sup>2</sup>	P.O.A
MPJ6	4x185mm <sup>2</sup>	P.O.A
MPJ7	4x300mm <sup>2</sup>	P.O.A
MPJ8	4x400mm <sup>2</sup>	P.O.A

### BICASEAL - SOLID SETTING PUTTY

Description	Ref. No.	Price £ each
0.5 Kg Pack	F70612-52	P.O.A



### ELECTRICAL WEATHERPROOF COMPOUND

Ref. No.	Price £ each
R391	P.O.A

\* Note: P.O.A = Price On Application



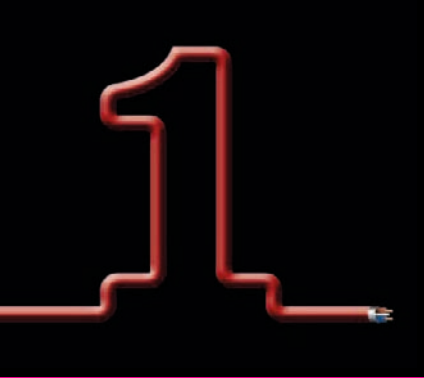
## **PRYSMIAN AFUMEX THE ULTIMATE LOW SMOKE ZERO HALOGEN RANGE**

**Afumex Range  
Brochure now available**

Download at  
[www.afumexcables.co.uk](http://www.afumexcables.co.uk)

or contact Marketing on:  
Tel: +44 (0)23 8029 5029  
[cables.marketing.uk@prysmian.com](mailto:cables.marketing.uk@prysmian.com)

**Afumex**  
[www.afumexcables.co.uk](http://www.afumexcables.co.uk)



## **PRYSMIAN FP**

### **THE ULTIMATE FIRE PERFORMANCE RANGE**

**FP Range**  
**Brochure now available**

Download at  
[www.fpcables.co.uk](http://www.fpcables.co.uk)

or contact Marketing on:  
Tel: +44 (0)23 8029 5029  
[cables.marketing.uk@prysmian.com](mailto:cables.marketing.uk@prysmian.com)



[www.fpcables.co.uk](http://www.fpcables.co.uk)